

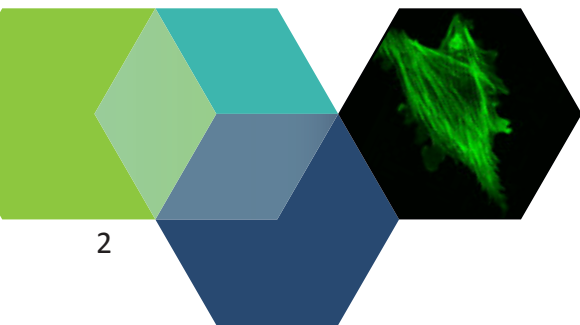
GLOBAL
BIOIMAGING
growing collaboration



GLOBAL BIOIMAGING
EXCHANGE OF EXPERIENCE II
Bangalore, India, September 15th - 16th 2017

TABLE OF CONTENTS

3	◦ WELCOME
4	◦ PROGRAM
7	◦ VENUE
7	◦ CAMPUS MAP
8	◦ HEALTH AND SAFETY NOTES
8	◦ USEFUL PHONE NUMBERS
9	◦ ACCOMMODATION
9	◦ GETTING TO THE VENUE
10	◦ CATERING
10	◦ INTERNET AND PRINTING
10	◦ TIME
11	◦ CONTACT
12	◦ PARTICIPANTS
14	◦ NOTES



Dear Global Biolmaging Stakeholder. Namaste!

We are extremely pleased to welcome you to the second Exchange of Experience workshop to be held in Bangalore, India, September 15-16, 2017!

The Global Biolmaging project (GBI), has reached its mid-phase. The work is proceeding well towards the Global Biolmaging objectives, including networking, strengthening the international partnership and collaboration, exchange of best practices, image data management, facility staff training and the very successful GBI Job Shadowing Program for infrastructure facility personnel.

To discuss the GBI core interests, the first EoE at EMBL in Heidelberg, in June 2016, brought together almost 80 participants, including European imaging infrastructure personnel and their international colleagues from India, Australia, Japan, South Africa, Argentina and the USA.

To continue the work to build guidelines for truly international open access to imaging infrastructure services, the second EoE workshop will now take place in the National Centre for Biological Sciences, NCBS, in Bangalore hosted by the Indian GBI partners. It will focus on international open user access, targeting international imaging infrastructure operators from managers and directors to technical facility staff, including scientists, opinion leaders, policy makers and funders. During the workshop, all the GBI stakeholders are strongly invited to share their expectations, experience and recommendations for the future cooperation on open access policy aspects. Another generic key issue is sustainability of operation, including how to strengthen impact, value building, branding, and visibility.

During the EoEII we are also happy to launch the 2nd open call for applications for the GBI Job Shadowing Program.

We would like to express our big gratitude to Prof. Jitu Mayor (Director of the NCBS) and Dr. Krishnamurthy for the perfect organization and hosting of this workshop on the beautiful campus of the NCBS. Hosting this event back-to-back to the renowned NCBS microscopy course BMC2017 allows several participants to attend both events.

We enthusiastically welcome you to the 2nd Exchange of Experience workshop of GBI. We expect to learn a lot from all collected expertise and experience, and to have stimulating and innovative discussions during the meeting sessions, the breaks, and the dinner.



Antje Keppler

Global Biolmaging project coordinator



John Eriksson

Global Biolmaging WP2 leader

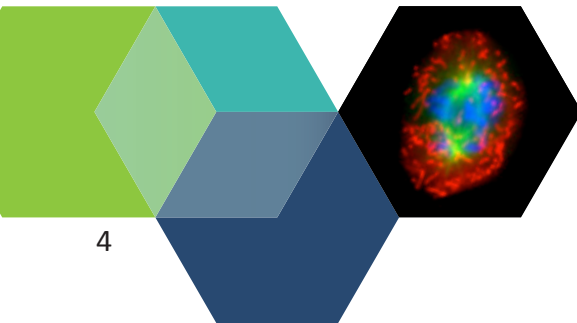
PROGRAM

Thursday. 14th of September

- 17.00-19.00** **GBI 8th Management Board meeting**
(Nucleus meeting room, NCBS, closed session)
- 20.00** **GBI project partners' dinner**

Friday. 15th of September

- 9.00-10.00** **Registration and coffee**
- 10.00-10.15** **Welcome and Opening of the Meeting**
Jitu Mayor and Antje Keppler
- 10.15-12.15** **Session I - Defining open access to imaging infrastructures**
(*Chair: H. Krishnamurthy*)
- GBI Overview: Antje Keppler
 - EuBI Overview and Open Access: Jan Ellenberg
 - European Charter for Access to Research Infrastructures:
Federica Paina
 - Objectives of EoEII meeting: John Eriksson
- 12.15-13.15** **Lunch break**
- 13.15-14.00** **Session II - Building an imaging research infrastructure**
(*Chair: Antje Keppler*)
- Imaging in South Africa: Ben Loos
 - EuBI Web Access Portal: Pasi Kankaanpää



14.00-15.30 **Benchmarking of existing open access in different infrastructures** (*Chair: John Eriksson*)

- Survey results and short talks given by the infrastructure representatives

15.30-16.00 **Coffee break**

16.00-19.00 **Session III - Around the world: Research Infrastructure operation** (*Chair: Silvio Aime*)

- Imaging in Canada, Claire Brown; remote participation
- AMMRF: David Sampson
- ABIS: Naoto Ueno
- NCBS: H. Krishnamurthy
- INSTRUCT: Ray Owens
- ELIXIR: Andrew Smith

19.00 **Wrap-up of the 1st day**

19.30 **Dinner**

Saturday. 16th of September

8.30-9.00 **Welcome coffee**

9.00-10.30 **Session III continued - Around the world: Imaging infrastructure operation** (*Chair: Jason Swedlow*)

- HHMI Janelia Research Campus: Teng-Leong Chew
- EuBI Node Candidate MMI Torino: Silvio Aime
- Singapore: Graham Wright

10.30-12.30 **Session IV - Data resources and virtual tools**
(*Chair: David Sampson*)

- MASSIVE and the Characterisation VL - Digital Microscopes for 21st Century Discovery: Wojtek Goscinski
- SSBD: a database for biological dynamics and microscopy images: Shuichi Onami
- The Image Data Resource: Jason Swedlow
- Global sampling of image data infrastructures - Flash talks 5'

- Panel discussion on common solutions for image data challenges

12.30-13.00 Lunch break

13.00-14.30 Session V - Sustainability for imaging research infrastructures
(Chair: Jan Ellenberg)

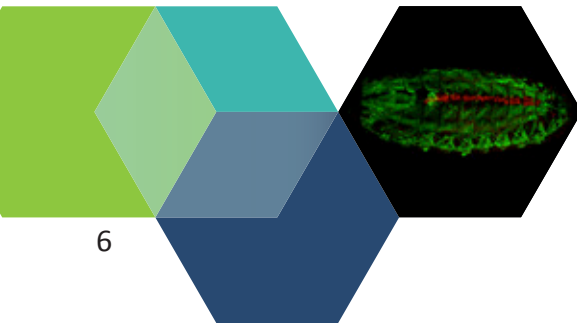
- Australia – Success factors for long-term sustainability: Ian Smith
- India - Funder’s perspective: Representative from DBT
- EC - Funder’s perspective: Antje Keppler on behalf of the EC Delegation to India

14.30-15.00 Coffee break

15.00-17.00 Session V continues - Open Discussion: GBI - Future perspectives/visions *(Chair: John Eriksson)*

17.00-17.30 USA - Funder’s perspective
Richard Conroy, NIH, (remote participation)

17.30-18.00 Closing session
Antje Keppler, Jitu Mayor

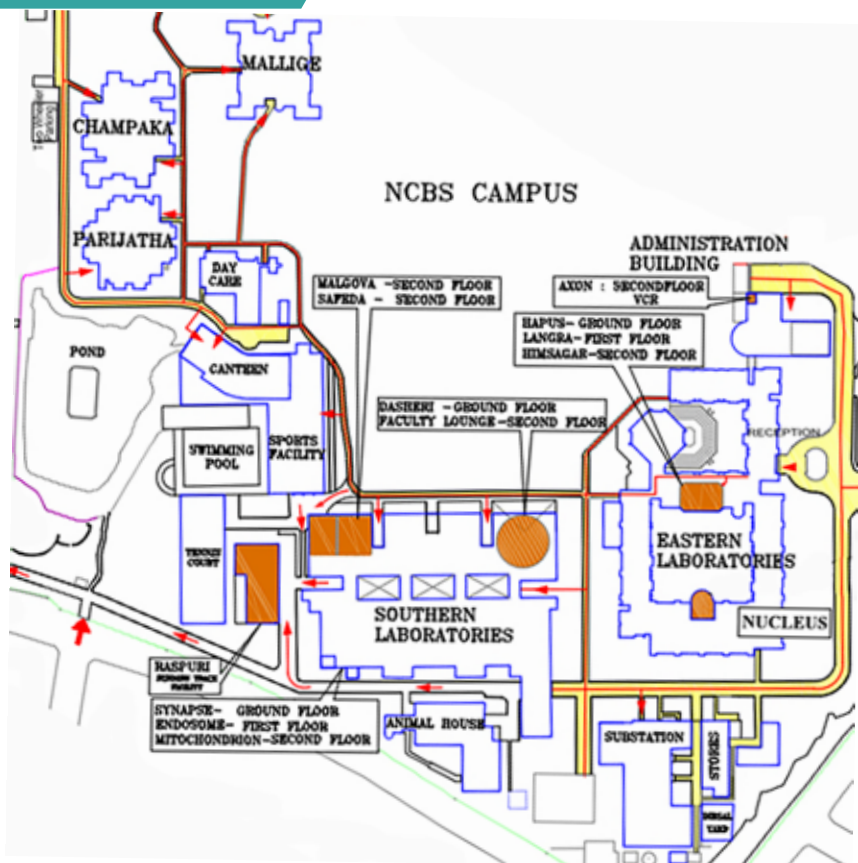


VENUE

The 2nd EoE Workshop will take place at the National Centre for Biological Sciences (NCBS) in Bangalore, India.

The meeting will take place in the Southern Laboratories C building, 2nd floor.

CAMPUS MAP



HEALTH AND SAFETY NOTES

Smoking - This is a No-Smoking campus.

Eating in auditoria - Food and beverages are not allowed in the auditorium.

Other safety notes - Light jackets is recommended, as the venue is air conditioned.

USEFUL PHONE NUMBERS

NCBS Reception

+91 80-2366-6001 or +91 80-2366-6002

NCBS reception is open 24/7. In case of delayed flights or other urgent issues, please contact the reception.

Emergency numbers

In case of emergency, dial +91 80-6717-6666 or +91 80-2366-6666 or +91 96-8637-5064.

ACCOMMODATION

There are two main options for accommodation. Most participants will be accommodated on campus at the Champaka building and some will be accommodated at Sugandhi on Mandara Campus.

GETTING TO THE VENUE

From accommodation

Participants staying at Champaka building (on campus) can walk to the conference venue.

Special transportation will be arranged for the participants staying at Sugandhi (Mandara Campus) at 7.45 in the morning, and departure back to the accommodation after dinner.

From the City Railway Station

The City Railway Station is located at the Majestic area. Different transportations are also available from there, such as City Taxi, Auto Rickshaws, and buses.

From Majestic, these buses go to GKVK Campus Main Gate: 280, 281(C), 282 (A, B), 283 (A, B, C), 284 (A) to 284 (F), 285 (A, B, F, G), 289 (A, B, C), 297(A), 298 (B), 299 (B). Please get off at the GKVK Main Gate stop.

Bus 277 from Majestic goes directly inside the GKVK Campus.

From Shivaji Nagar, bus 284(B) and 402 stops at the GKVK Campus Main Gate.

CATERING

Meals and coffee breaks are included. The meals will be served at the Main Canteen on the 1st floor (Glass Roof).

INTERNET AND PRINTING

There is open Wi-fi on the campus. Local IT-staff will provide more information.

Please contact the local organizers if you need to print during the meeting.

TIME

Time zone is IST (UTC+5:30).

CONTACT



Prof. Satyajit Mayor

Director of NCBS
mayor@ncbs.res.in
+91 80 2366 6260



H. Krishnamurthy

Scientific Officer
krishna@ncbs.res.in
+91 80 236666013

Bhavya S

Project Assistant
bhavyas@ncbs.res.in, meetings@ncbs.res.in
+97 42992541 / 080 23666337

Bhavya Rangaswamy

Meetings Office Coordinator
brangaswamy@ncbs.res.in, meetings@ncbs.res.in
+91 98 44593831 / +91 80 23666166

Antje Keppler

Project Coordinator
Global-Biolmaging
keppler@embl.de
+49 6221 387 8847



Maritta Löytömäki

Project Manager
Global-Biolmaging
maritta.loytomaki@utu.fi
+358 50 411 6682



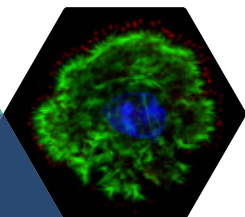
Federika Paina

Project Manager
Global-Biolmaging
federica.paina@embl.de
+49 6221 387 8655



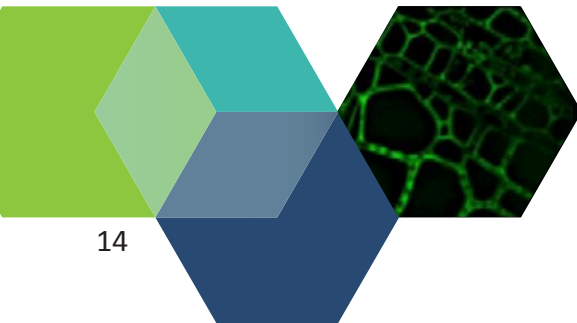
PARTICIPANTS

FULL NAME	AFFILIATION	EMAIL ADDRESS
Aime, Silvio	University of Torino, Italy	silvio.aime@unito.it
Arora, Gurjeet	Hamamatsu Photonics, UK	garora@hamamatsu.co.uk
Badri Narayan, Natarajan	Centre for Cellular And Molecular Platforms, India	irdabn@gmail.com
Brown, Claire	Mcgill University, Canada	claire.brown@mcgill.ca
Chakraborty, Uttara	Indian Institute of Science, India	uttara@biochem.iisc.ernet.in
Changou, Austin	Taipei Medical University, Taiwan	AustinC99@tmu.edu.tw
Chaudhari, Madhukar	Leica Microsystems, India	madhukar.chaudhari@leica-microsystems.com
Cheng, Holland	University of California, USA	rhc@pioms.org
Chew, Teng-Leong	Janelia, USA	chewt@janelia.hhmi.org
Conroy, Richard	NIH, USA	Richard.Conroy@nih.gov
Ellenberg, Jan	EMBL, Germany	jan.ellenberg@embl.de
Endo, Shinichiro	Tokai Hit Co., Ltd., Japan	s-endo@tokaihit.com
Eriksson, John	Turku BioImaging, Finland	john.eriksson@abo.fi
Fuery, Caroline	Australian Microscopy & Microanalysis Research Facility, Australia	caroline.fuery@sydney.edu.au
Ghose, Aurnab	IISER, Pune, India	aurnab@iiserpune.ac.in
Goscinski, Wojtek James	Monash University, Australia	wojtek.goscinski@monash.edu
Guzman, Camilo	Turku BioImaging, Finland	camilo.guzman@abo.fi
Jagavelu, Kumaravelu	CSIR-Central Drug Research Institute, India	kumaraveluj@cdri.res.in
Jurina, Hana	EMBL, Germany	hana.jurina@embl.de
Kammaragatte Vaishnava, Giridhara	Leica Microsystems, India	giridhara.kv@leica-microsystems.com
Kankaanpää, Pasi	Turku BioImaging, Finland	pasi.kankaanpaa@abo.fi



Karvonen, Henok	Turku BioImaging, Finland	henok.karvonen@utu.fi
Keppler, Antje	EMBL, Germany	keppler@embl.de
Krishnamurthy, H.	NCBS, India	krishna@ncbs.res.in
Loos, Ben	Stellenbosch University, South Africa	bloos@sun.ac.za
Löytömäki, Maritta	Turku Bioimaging, Finland	makrpy@utu.fi
Mairinoja, Laura	Turku Bioimaging, Finland	lmairino@abo.fi
Mayor, Jitu	NCBS, India	mayor@ncbs.res.in
Menk, Ralf Hendrik	Elettra Sincrotrone Trieste & University of Saskatchewan, Italy & Canada	ralf.menk@elettra.eu
Meriläinen, Leena	University of Helsinki, Finland	leena.merilainen@helsinki.fi
Mukherjee, Ananya	Institute for Stem Cell Biology And Regenerative Medicine, India	ananyam@instem.res.in
N, Ranjana	CCAMP, India	nranjana@ccamp.res.in
Onami, Shuichi	RIKEN Quantitative Biology Center, Japan	sonami@riken.jp
Owens, Ray	INSTRUCT, OPFF, UK	ray@strubi.ox.ac.uk
Paina, Federica	EMBL, Germany	paina@embl.de
Panda, Sanjukta	India	sanjuktap92@gmail.com
Podder, Santosh	Indian Institute of Science, India	podder.san@gmail.com
Pötsönen, Mikko	Embassy of Finland In New Delhi, India	mikko.potsonen@formin.fi
Rainio, Eeva	Turku BioImaging, Finland	erainio@utu.fi
Salamero, Jean	France Bioimaging (CNRS-Institut Curie), France	jean.salamero@curie.fr
Sampson, David	AMMRF , Australia	david.sampson@uwa.edu.au
Shetty, Bhaskar	Leica Microsystems, India	bhaskar.shetty@leica-microsystems.com
Shigaval, Athresh	Turku Bioimaging, Finland	ashigava@abo.fi

Shimanuki, Mizuki	Okinawa Institute of Science And Technology Graduate University, Japan	mizuki.shimanuki@oist.jp
Smith, Andrew	ELIXIR	andrew.smith@elixir-europe.org
Smith, Ian	Monash University, Australia	ian.smith@monash.edu
Stoynov, Stoyno	Institute of Molecular Biology, Bulgaria	stoynov@bio21.bas.bg
Swedlow, Jason	University of Dundee, Scotland, UK	j.r.swedlow@dundee.ac.uk
Tcarenkova, Elena	University of Turku, Finland	eletca@utu.fi
Thiriet, Caroline	France Bioimaging - Eubi PPII WP7, France	caroline.thiriet@france-bioimaging.org
Tischer, Christian	EMBL, Germany	Christian.Tischer@EMBL.DE
Ueno, Naoto	NIBB, ABIS, Japan	nueno@nibb.ac.jp
Vittal, Vijay	Indian Institute of Science Education And Research, Pune, India	vijay.v@iiserpune.ac.in
Wright, Graham	IMB, Agency for Science, Technology And Research (A*STAR), Singapore	graham.wright@imb.a-star.edu.sg



STAY TUNED FOR EoE III
SEPTEMBER 2018. SYDNEY. AUSTRALIA



TURKU
BIOIMAGING
{ More than you can imagine }



European Research Infrastructure for Imaging Technologies
in Biological and Biomedical Sciences